

- LI. COMMENTS: G.C. TO COMPLY:
- MERCHANDISING WITHIN THE DESIGN DISPLAY ZONE SHALL COMPLY WITH THE FOLLOWING:
 - EXTENDING 5'-0" FROM THE STOREFRONT GLAZING, THE SIDE WALLS OF THE STORE SHALL BE DEDICATED TO STOREFRONT DISPLAY, AND THE STOREFRONT SHOWN WINDOWS SHALL NOT CONTAIN SALE OR DISCOUNTED MERCHANDISE.
 - AT THE STOREFRONT ENTRY, DISPLAY FIXTURES OR MERCHANDISE, EITHER TEMPORARY OR PERMANENT, SHALL NOT BE PLACED CLOSER THAN THREE (3'-0") FEET INSIDE THE TENANT'S PREMISES, MEASURED FROM THE POINT OF THE STOREFRONT CLOSURE.

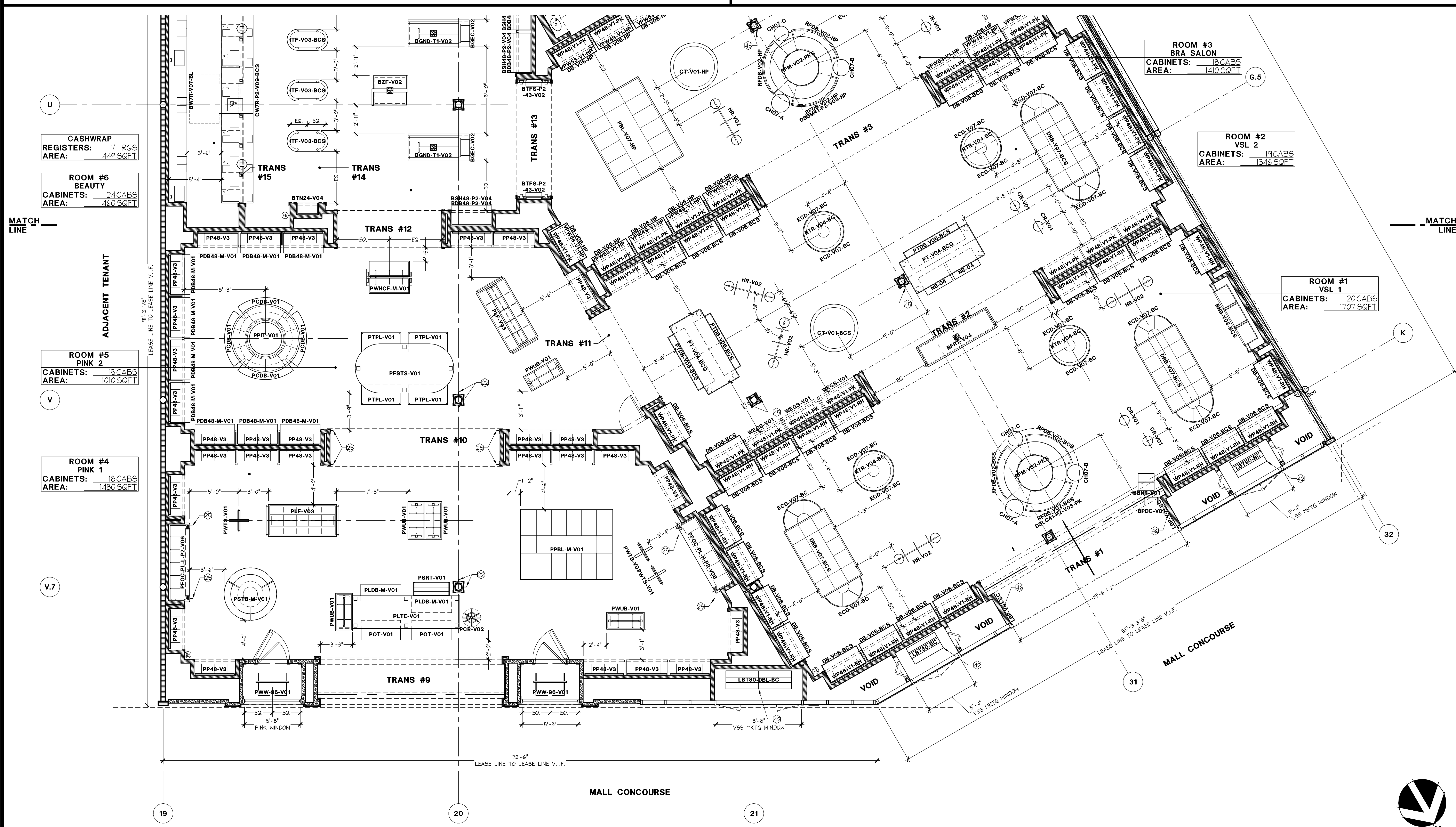
- GENERAL
- ⊕ NOT USED
 - ⊖ NOT USED
- PINK
- ⊕ PINK ARMCHAIR FIXTURE. REFER TO DETAIL L140.01 FOR ATTACHMENT AND LADDER RAIL DETAILS.
 - ⊖ BRASS HOOKS MOUNTED VERTICALLY. REFER TO DETAIL H/A10.01.
 - ⊕ NOT USED
 - ⊖ NOT USED
 - ⊕ BRASS HOOK. ATTACH WITH VENDOR SUPPLIED SCREWS. IF BLOCKING AND/OR WOOD TRIM IS NOT PRESENT USE MILITARY GYP. BD. ANCHORS. REFER TO INTERIOR ELEVATIONS FOR HEIGHT.
- VSS
- ⊕ BRA WARDROBE FIXTURE. REFER TO DETAIL N/A11.08 FOR ATTACHMENT.
 - ⊖ LIGHTBOX TOWER FIXTURE. REFER TO STOREFRONT ELEVATION FOR GRAPHIC TAG CALLOUT.
 - ⊕ NOT USED
 - ⊖ VSL ACCESSIBLE FITTING ROOM BENCH - REFER TO J/A11.08
 - ⊕ CRYSTAL KNOB INSTALL ON COLUMN FACE @5'-3" A.F.F. G.C. TO INSTALL W/ VENDOR PROVIDED TOGGLE BOLTS.
 - ⊖ ILLUMINATED PORTAL SIGNBOX. REFER TO STOREFRONT SECTIONS FOR MOUNTING. REFER TO ELEC. DWGS. FOR POWER REQUIREMENTS.
 - ⊕ ROSS SUPPORTED DRAPERY MOUNTED TO FACE OF VALANCE ABOVE TRANSITION. REFER TO DETAIL N/A11.05.

NON-SALES / ASSOCIATE AMENITY AREA BREAKDOWN	
1 PERSON MANAGER OFFICE	
2 PERSON MANAGER OFFICE	X
3 PERSON MANAGER OFFICE	
BREAK AREA	
BREAK ROOM	X
MULTIUSE ROOM	
OPS OFFICE	
OPS/CASH OFFICE	
TRAINING ROOM	
DSM OFFICE	X
RSM OFFICE	

REFER TO INTERIOR ELEVATIONS AND SHEET A00.04 FOR PINK GRAPHIC PLACEMENT AND SCHEDULE

REFER TO SHEET A00.03 FOR FIXTURE SCHEDULE

PRESENTATION AND FIXTURE PLAN KEYNOTES



PRESENTATION AND FIXTURE PLAN

1/4" = 1'-0"

A

SHREMSHOCK
Shremshock Architects, Inc.
7000 W. Campus Rd. Suite 150 New Albany, OH 43054
T: 614.646.4500 | F: 614.646.4501 | shremshock.com
Timothy J. Shremshock, Architect | 118305

Lbrands
STORE DESIGN & CONSTRUCTION
Three Limited Parkway • Columbus, Ohio 43230
Telephone: 614.415.7000 • Fax: 614.415.7349

PROJECT INFORMATION:
VICTORIA'S SECRET
NORTH POINT MALL
SPACE ALLOCATION
NORTH POINT CIRCLE
ALPHARETTA, GA 30022

REVISIONS:
REQUIRED BY: DATE:
1. NO ADDENDUM - LANDLORD COMMENTS
& MASTER UPDATES (1515a.01 & 015a) 01/02/2015

DATE ISSUED: 09/19/14
DESIGNED BY: CN
DRAWN BY: AMJ
CHECKED BY: JM/SKM

PRESENTATION AND FIXTURE PLAN
DRAWING NUMBER:
A06.01